

U.S. NAVAL STATION MAYPORT 2Q HYDROGRAPHIC EXAM SURVEY FY22


 US Army Corps
 of Engineers
 Jacksonville District
 SAFETY ON THIS JOB
 DEPENDS ON YOU



SHEET INDEX



LOCATION MAP

LEGEND	
	MONUMENT
	LIGHTED BEACON
	GREEN DAYBEACON
	RED DAYBEACON
	RED LIGHTED BUOY
	GREEN LIGHTED BUOY
	CAN BUOY
	NUN BUOY
	TIDE STAFF
	PROJECT DEPTH

SURVEY NOTES

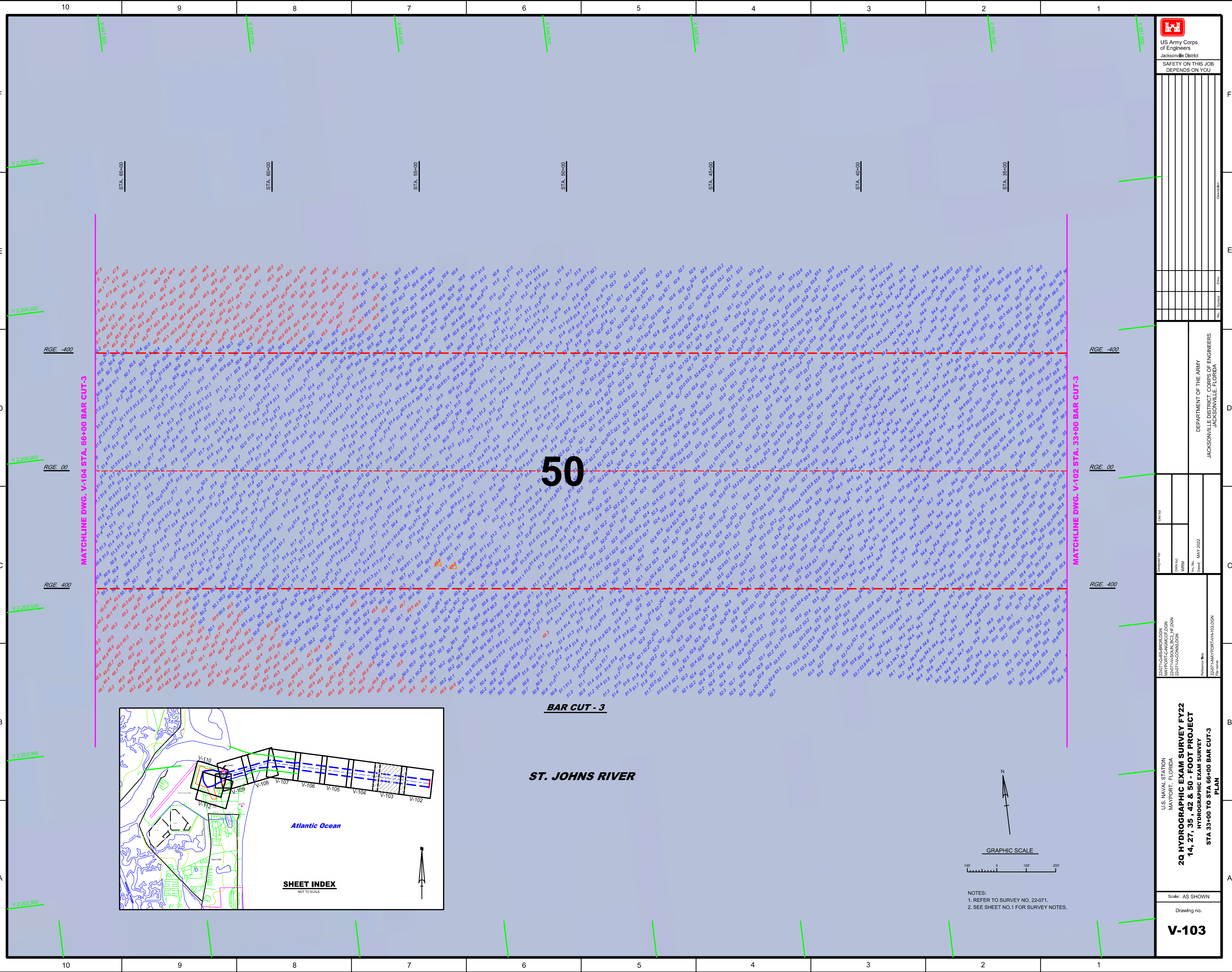
- REFER TO SURVEY NO. 22-071.
 - DEPTHS DEPICTED BY THIS SURVEY ARE REFERENCED TO MLLW, TIDAL EPOCH 1983-2001 AS REPORTED BY THE NATIONAL OCEANIC AND ATMOSPHERIC ADMINISTRATION (NOAA), NOAA'S VDATUM MODEL, AND PUBLISHED TIDE STATION DATA. WE USED TO GENERATE A HYPACK KINEMATIC TIDE DATUM (KTD) MODEL. THIS KTD MODEL, BEING A COMBINATION OF THOSE TWO SOURCES, CANNOT BE CONSIDERED EQUIVALENT TO THE VDATUM MODEL BECAUSE OF POSSIBLE ADDITIONS OR EDITS THERETO. DO NOT USE VDATUM MODEL IN PLACE OF THE KTD FILE. THE KTD MODEL USED FOR THIS SURVEY IS:
 CAMDENGASASSAU-DUVAL-STJOHNS-FLAGLER_20191202.KTD.
 - TIDAL REDUCTIONS WERE OBTAINED UTILIZING A REAL-TIME KINEMATIC (RTK) GPS AND REFERENCED TO MLLW UTILIZING THE KTD FILE REFERENCED ABOVE, AND CALIBRATED TO THE PUBLISHED MLLW HEIGHTS OF THE BENCHMARKS ASSOCIATED WITH THE TIDE GAGE SITE SPECIFIED BELOW:
 NOAA TIDAL STATION 872-0218, BAR PILOTS DOCK
 NOAA TIDAL STATION 872-0214, DEGAUSSING STRUCTURE
 - ALL ELEVATIONS ARE BELOW THE CHART DATUM UNLESS PRECEDED BY A (+) SIGN.
 - PLANE COORDINATES ARE BASED ON THE TRANSVERSE MERCATOR PROJECTION FOR THE EAST ZONE OF FLORIDA AND REFERENCED TO NORTH AMERICAN DATUM OF 1983 (NAD83).
 - ALL STATIONING REFERS TO THE CENTERLINE OF THE CHANNEL.
 - THIS SURVEY WAS PERFORMED USING REAL-TIME KINEMATIC (RTK) GPS POSITIONING WITH THE FOLLOWING REFERENCE BASE LOCATION:
 REFERENCE BASE LOCATED AT "USACE MAYPORT ARP" (OPUS PID: BBG280)
 - VERTICAL MEASUREMENTS WERE MADE USING A R2 SONIC 2024 MULTI-BEAM AND AN ODOM ECHOTRAC E20 OPERATING AT 28/200 KHZ. ALL MULTI-BEAM SOUNDINGS IN THE MEC AND BARCUTS ARE IN HIGH FREQUENCY. SINGLE-BEAM SOUNDINGS IN THE TURNING BASIN, SLIP, SMALL BOAT BASIN AND MEC STA. 56+27 TO 63+42 ARE IN LOW FREQUENCY. SINGLE-BEAM SOUNDINGS IN THE MEC FROM STA. 53+00 - 56+00 ARE IN HIGH-FREQUENCY.
- | VESSEL | DATE OF SURVEY | CUT |
|-----------|------------------------|---|
| SB-36 | 02 MAR 2022 | ENTRANCE CHANNEL |
| SV SALZER | 09 APR 13, 16 MAY 2022 | BAR CUT-3 |
| SB WELLS | 01 APR 2022 | SMALL BOAT BASIN, SLIP, TURNING BASIN, ENT. CH. |
- AIDS TO NAVIGATION WERE LOCATED DURING THIS SURVEY.
 - THE INFORMATION DEPICTED ON THIS MAP REPRESENTS THE RESULTS OF SURVEYS MADE ON THE DATES INDICATED ABOVE AND CAN ONLY BE CONSIDERED AS INDICATING THE GENERAL CONDITIONS AT THAT TIME. THIS CHART IS SOLELY FOR THE DISTRIBUTION OF AVAILABLE DEPTHS AT THE TIME OF THE SURVEY.
 - SURVEY ACCURACY PERFORMANCE STANDARDS, QUALITY CONTROL, AND QUALITY ASSURANCE REQUIREMENTS WERE FOLLOWED DURING THIS SURVEY IN ACCORDANCE WITH USACE EM 1110-2-1003, HYDROGRAPHIC SURVEYING, 30 NOV 2013 AND EM 1110-2-6506, STANDARDS AND PROCEDURES FOR REFERENCING PROJECT ELEVATION GRADES TO NATIONWIDE VERTICAL DATUMS, 31 DEC 2010.

22-071-CH-85-BIRDLDGN
 MAYPORT-CH-85002.DGN
 22-071-MA-PORT-VH-101.DGN
 File name:

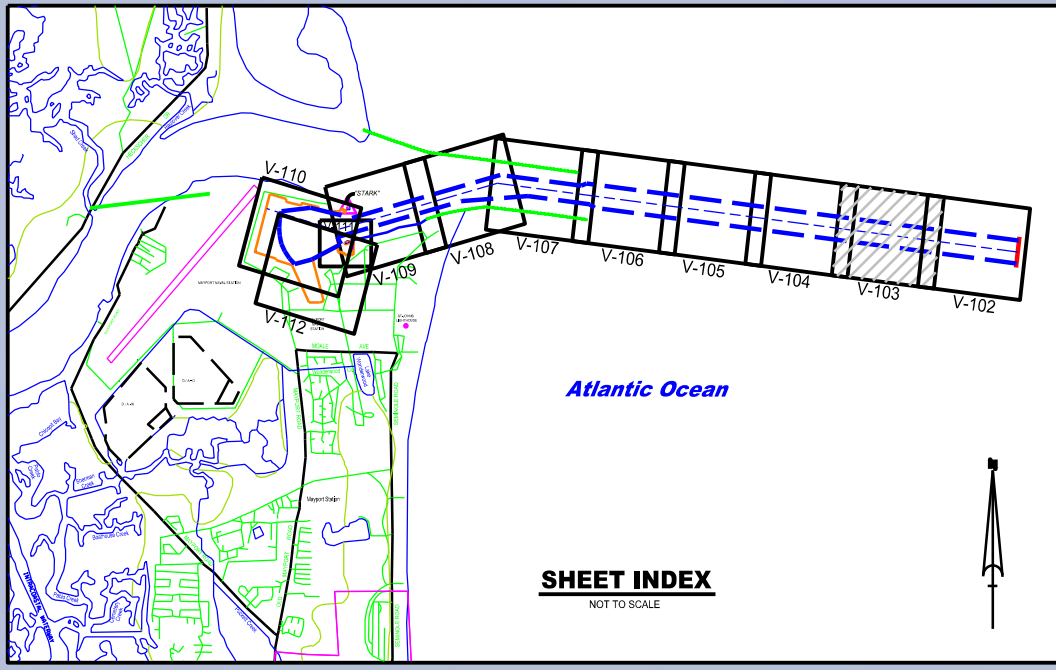
2Q HYDROGRAPHIC EXAM SURVEY FY22
14, 27, 35, 42 & 50 - FOOT PROJECT
 HYDROGRAPHIC EXAM SURVEY

U.S. NAVAL STATION
 MAYPORT, FLORIDA

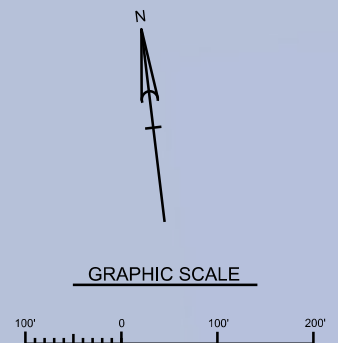
Scale: AS SHOWN
 Drawing no.
VH-101



50



BAR CUT - 3
ST. JOHNS RIVER



NOTES:
1. REFER TO SURVEY NO. 22-071.
2. SEE SHEET NO.1 FOR SURVEY NOTES.

DEPARTMENT OF THE ARMY
JACKSONVILLE DISTRICT, CORPS OF ENGINEERS
JACKSONVILLE, FLORIDA

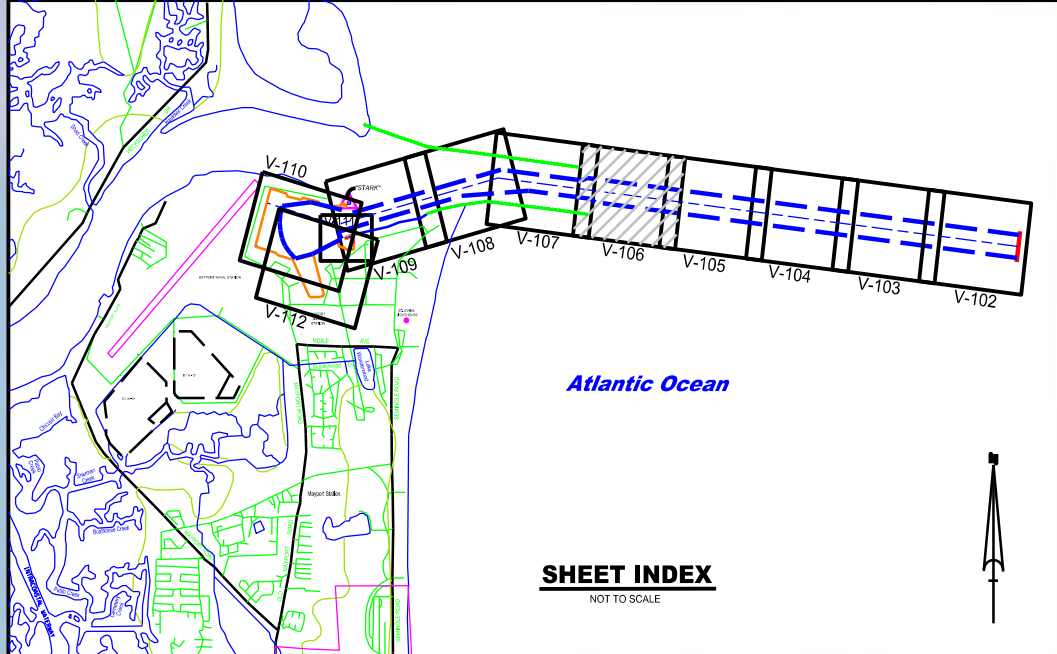
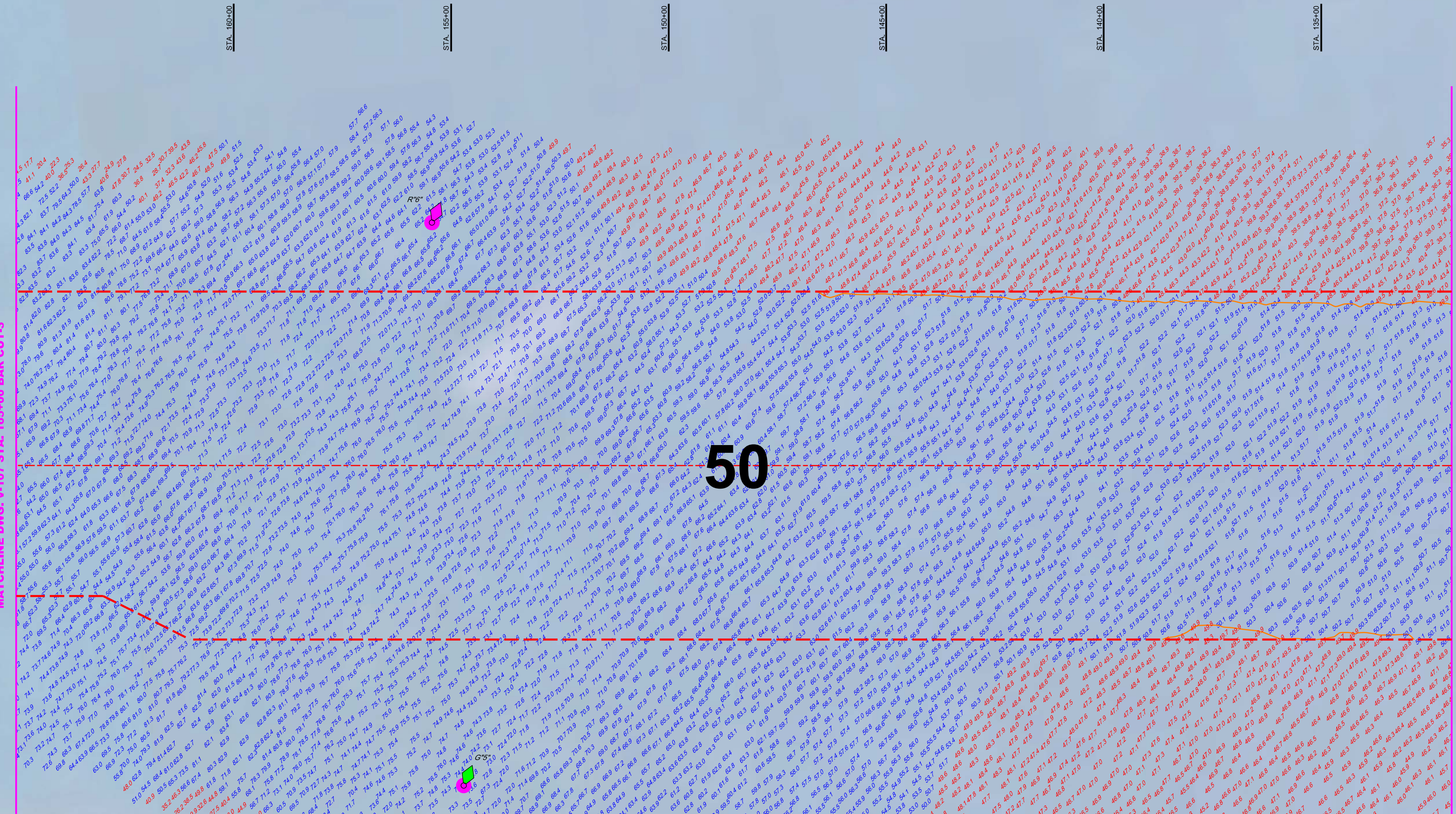
22-071-GS-BIRDSON
MAYPORT-CHICOPPEE/DON
MAYPORT-CHICOPPEE/DON
22-071-A-COCONOLOGY

22-071-A-MAYPORT-AH-103/DON
22-071-A-MAYPORT-AH-103/DON

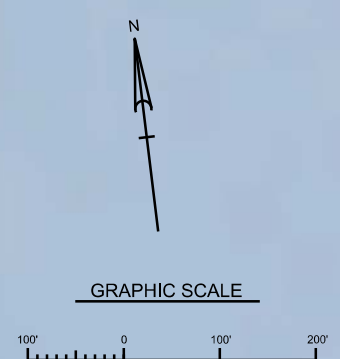
2Q HYDROGRAPHIC EXAM SURVEY FY22
14, 27, 35, 42 & 50 - FOOT PROJECT
HYDROGRAPHIC EXAM SURVEY
STA 33+00 TO STA 66+00 BAR CUT-3

U.S. NAVAL STATION
MAYPORT, FLORIDA
Scale: AS SHOWN
Drawing no.
V-103

MAP LABEL	AIDS TO NAVIGATION	PLANE COORDINATES		LATITUDE	LONGITUDE
		X	Y		
G*5	LT. BUOY-5 (05/22)	538,411	2,204,276	30°23'46.94"	81°22'24.61"
R*6	LT. BUOY-6 (01/22)	538,493	2,205,570	30°23'59.75"	81°22'23.72"



BAR CUT - 3
ST. JOHNS RIVER



NOTES:
1. REFER TO SURVEY NO. 22-071.
2. SEE SHEET NO.1 FOR SURVEY NOTES.

DEPARTMENT OF THE ARMY
JACKSONVILLE DISTRICT, CORPS OF ENGINEERS
JACKSONVILLE, FLORIDA

Drawn by: [Name]
Checked by: [Name]
Date: MAY 2022

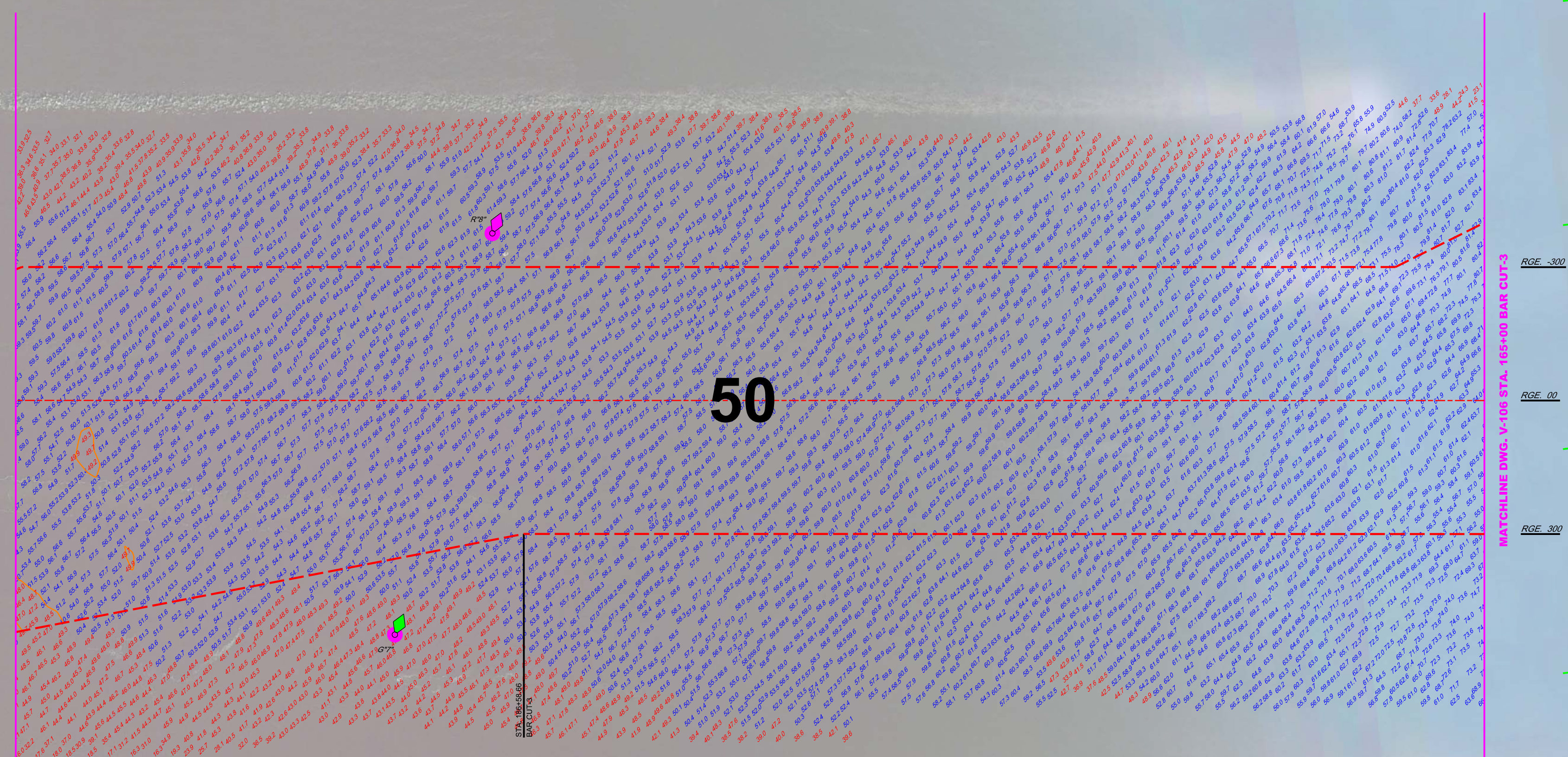
22-071-GS-BIRDSON
22-071-NG-CC-DCGN
22-071-AC-CON-DCGN
22-071-HA-NAV-DCGN

U.S. NAVAL STATION
MAYPORT, FLORIDA

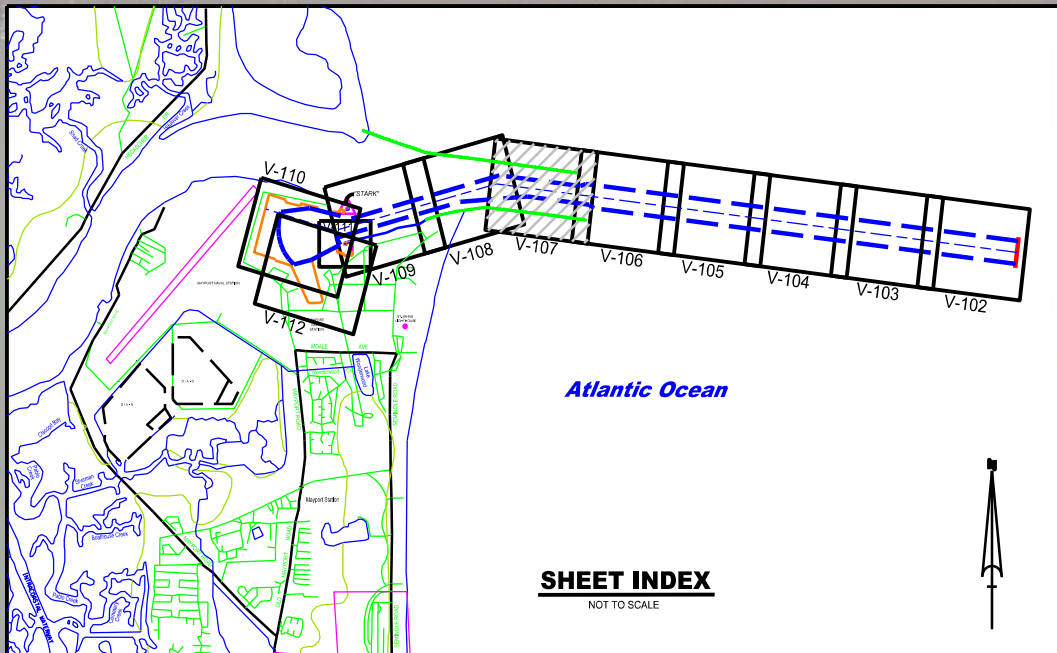
2Q HYDROGRAPHIC EXAM SURVEY FY22
14, 27, 35, 42 & 50 - FOOT PROJECT
HYDROGRAPHIC EXAM SURVEY
STA 132+00 TO STA 165+00 BAR CUT-3
PLAN

Scale: AS SHOWN
Drawing no.
V-106

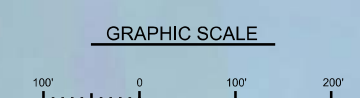
MAP LABEL	AIDS TO NAVIGATION	PLANE COORDINATES		LATITUDE	LONGITUDE
		X	Y		
G*7	LT. BUOY-7 (05/22)	534,984	2,204,901	30°23'53.02"	81°23'03.76"
R*8	LT. BUOY-8 (05/22)	535,310	2,205,770	30°24'01.63"	81°23'00.08"



50

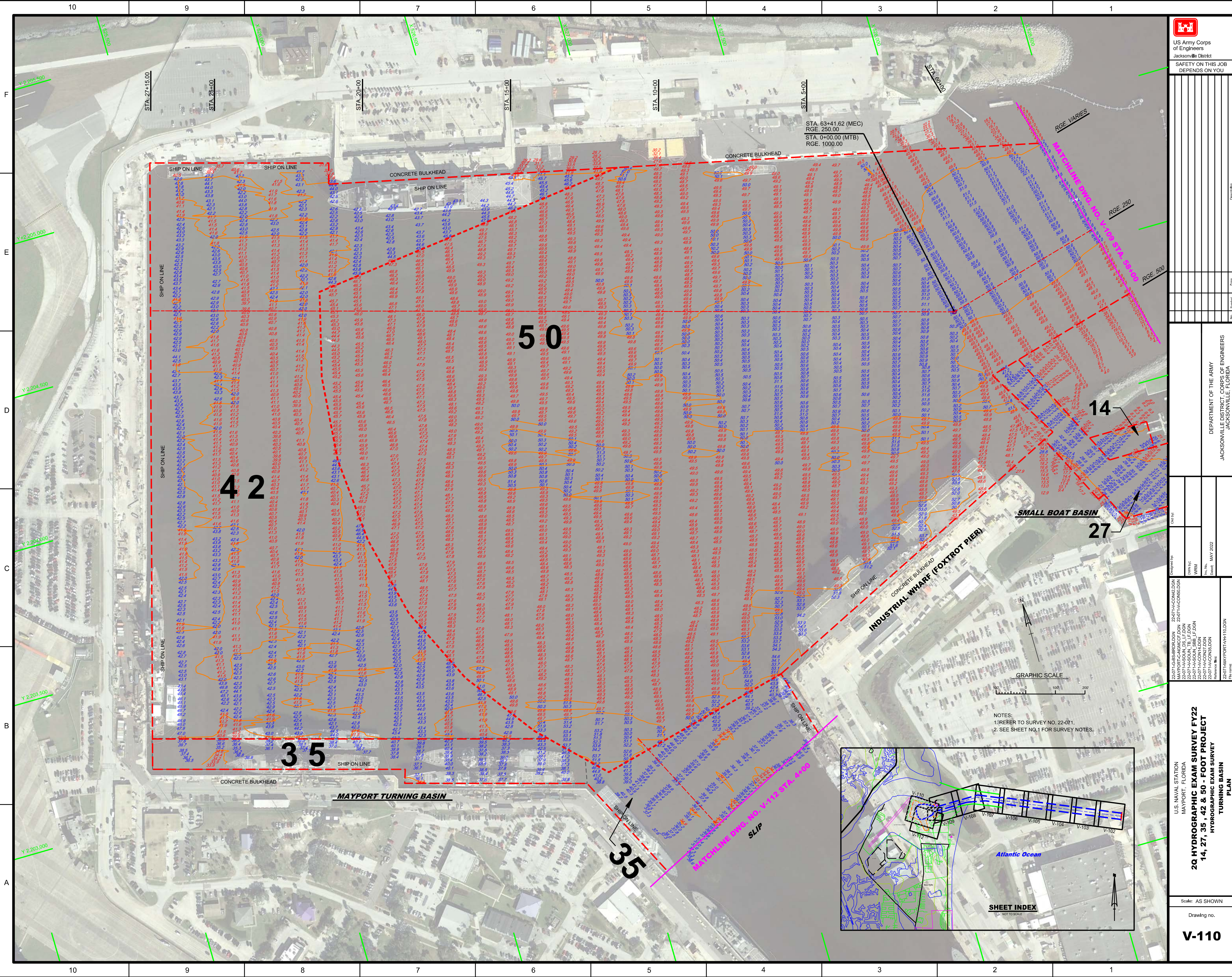


BAR CUT - 3
ST. JOHNS RIVER



NOTES:
1. REFER TO SURVEY NO. 22-071.
2. SEE SHEET NO.1 FOR SURVEY NOTES.

<p>U.S. NAVAL STATION MAYPORT, FLORIDA</p> <p>2Q HYDROGRAPHIC EXAM SURVEY FY22 14, 27, 35, 42 & 50 - FOOT PROJECT</p> <p>HYDROGRAPHIC EXAM SURVEY STA 165+00 TO STA 198+00 BAR CUT-3</p> <p>Scale: AS SHOWN</p> <p>Drawing no. V-107</p>	<p>DEPARTMENT OF THE ARMY JACKSONVILLE DISTRICT, CORPS OF ENGINEERS JACKSONVILLE, FLORIDA</p> <p>Author: 22-071-GS-BIRDSON 22-071-CH-NGRICE.DGN 22-071-NA-SQUILLI.EC_HF_JIB.DGN 22-071-NA-CONRIG.DGN 22-071-NA-NAV.DGN</p> <p>Checked by: WRM Date: MAY 2022</p> <p>Reference File: 22-071-NA-PORT-VH-107.DGN File name:</p>
--	--



US Army Corps of Engineers
 Jacksonville District
SAFETY ON THIS JOB DEPENDS ON YOU

Department of the Army
 Jacksonville District, Corps of Engineers
 Jacksonville, Florida

Drawing no.
V-110

2Q HYDROGRAPHIC EXAM SURVEY FY22
 14, 27, 35, 42 & 50 - FOOT PROJECT
 HYDROGRAPHIC EXAM SURVEY
 TURNING BASIN
 PLAN

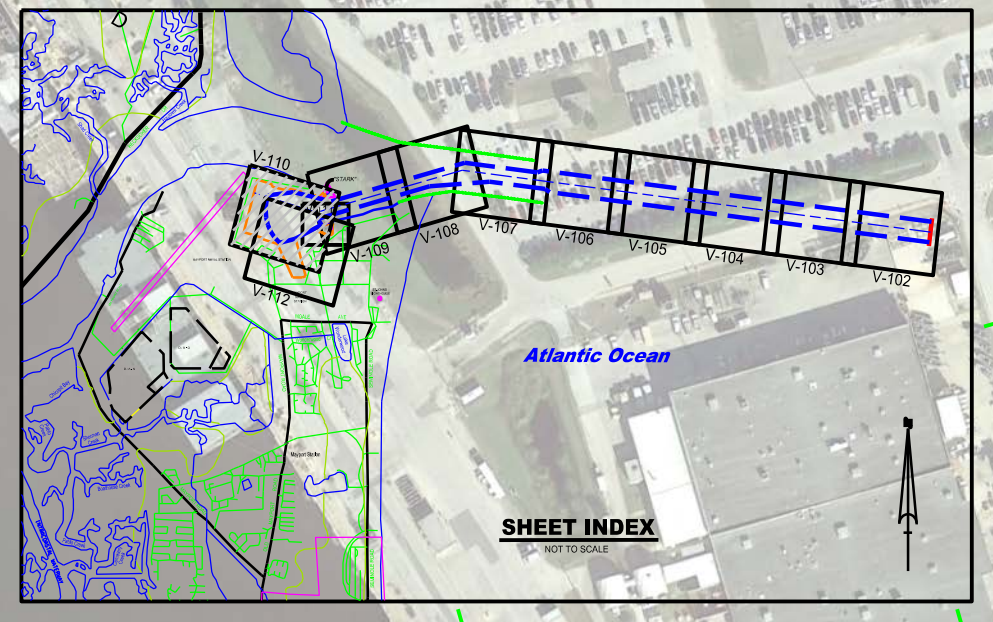
Scale: AS SHOWN

Drawing no. **V-110**

U.S. NAVAL STATION
 MAYPORT, FLORIDA
 22-071-A-C-001
 22-071-A-C-002
 22-071-A-C-003
 22-071-A-C-004
 22-071-A-C-005
 22-071-A-C-006
 22-071-A-C-007
 22-071-A-C-008
 22-071-A-C-009
 22-071-A-C-010
 22-071-A-C-011
 22-071-A-C-012
 22-071-A-C-013
 22-071-A-C-014
 22-071-A-C-015
 22-071-A-C-016
 22-071-A-C-017
 22-071-A-C-018
 22-071-A-C-019
 22-071-A-C-020
 22-071-A-C-021
 22-071-A-C-022
 22-071-A-C-023
 22-071-A-C-024
 22-071-A-C-025
 22-071-A-C-026
 22-071-A-C-027
 22-071-A-C-028
 22-071-A-C-029
 22-071-A-C-030
 22-071-A-C-031
 22-071-A-C-032
 22-071-A-C-033
 22-071-A-C-034
 22-071-A-C-035
 22-071-A-C-036
 22-071-A-C-037
 22-071-A-C-038
 22-071-A-C-039
 22-071-A-C-040
 22-071-A-C-041
 22-071-A-C-042
 22-071-A-C-043
 22-071-A-C-044
 22-071-A-C-045
 22-071-A-C-046
 22-071-A-C-047
 22-071-A-C-048
 22-071-A-C-049
 22-071-A-C-050
 22-071-A-C-051
 22-071-A-C-052
 22-071-A-C-053
 22-071-A-C-054
 22-071-A-C-055
 22-071-A-C-056
 22-071-A-C-057
 22-071-A-C-058
 22-071-A-C-059
 22-071-A-C-060

NOTES:
 1. REFER TO SURVEY NO. 22-071.
 2. SEE SHEET NO. 1 FOR SURVEY NOTES.

SHEET INDEX
 NOT TO SCALE



50

35

35

MAYPORT TURNING BASIN

INDUSTRIAL WHARF
 (FOXTROT PIER)

SMALL BOAT BASIN

STA. 5+00 D.S.

SLIP

STA. 10+00 D.S.

RGE. 23.0

SHIPS ON LINE

STA. 15+46.3 D.S.
 RGE. 250

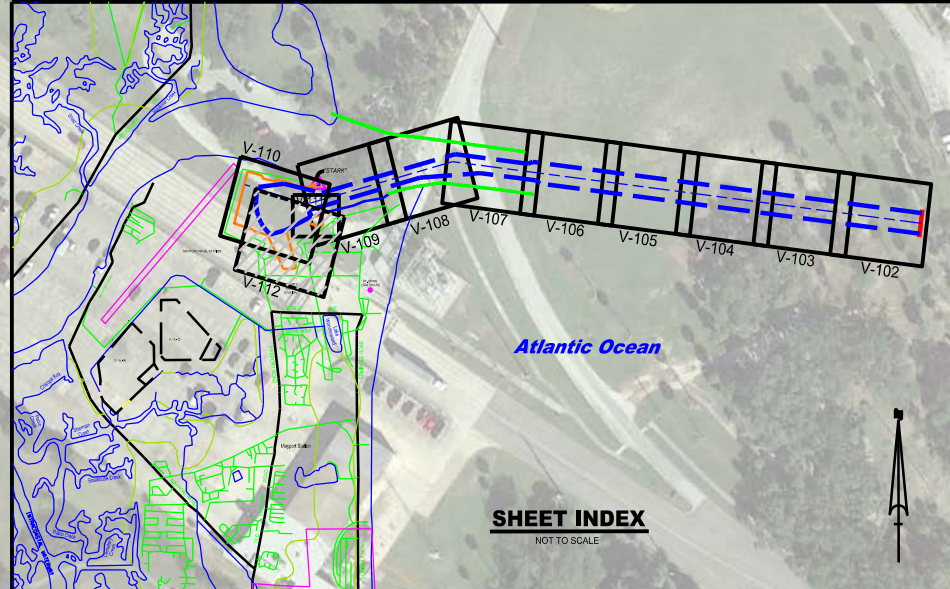
STA. 16+12 D.S.
 RGE. 363.7

STA. 16+31.3 D.S.
 RGE. 490.4



GRAPHIC SCALE
 100' 0 100' 200'

NOTES:
 1. REFER TO SURVEY NO. 22-071.
 2. SEE SHEET NO.1 FOR SURVEY NOTES.



DEPARTMENT OF THE ARMY
 JACKSONVILLE DISTRICT, CORPS OF ENGINEERS
 JACKSONVILLE, FLORIDA

22-071-G-BS-BRDLDGN
 MAYPORT-HIGHRISE P.DGN
 22-071-AACONS.DGN

U.S. NAVAL STATION
 MAYPORT, FLORIDA
2Q HYDROGRAPHIC EXAM SURVEY FY22
14, 27, 35, 42 & 50 - FOOT PROJECT
 HYDROGRAPHIC EXAM SURVEY
 DESTROYER SLIP
 PLAN

Scale: AS SHOWN

Drawing no.
V-112